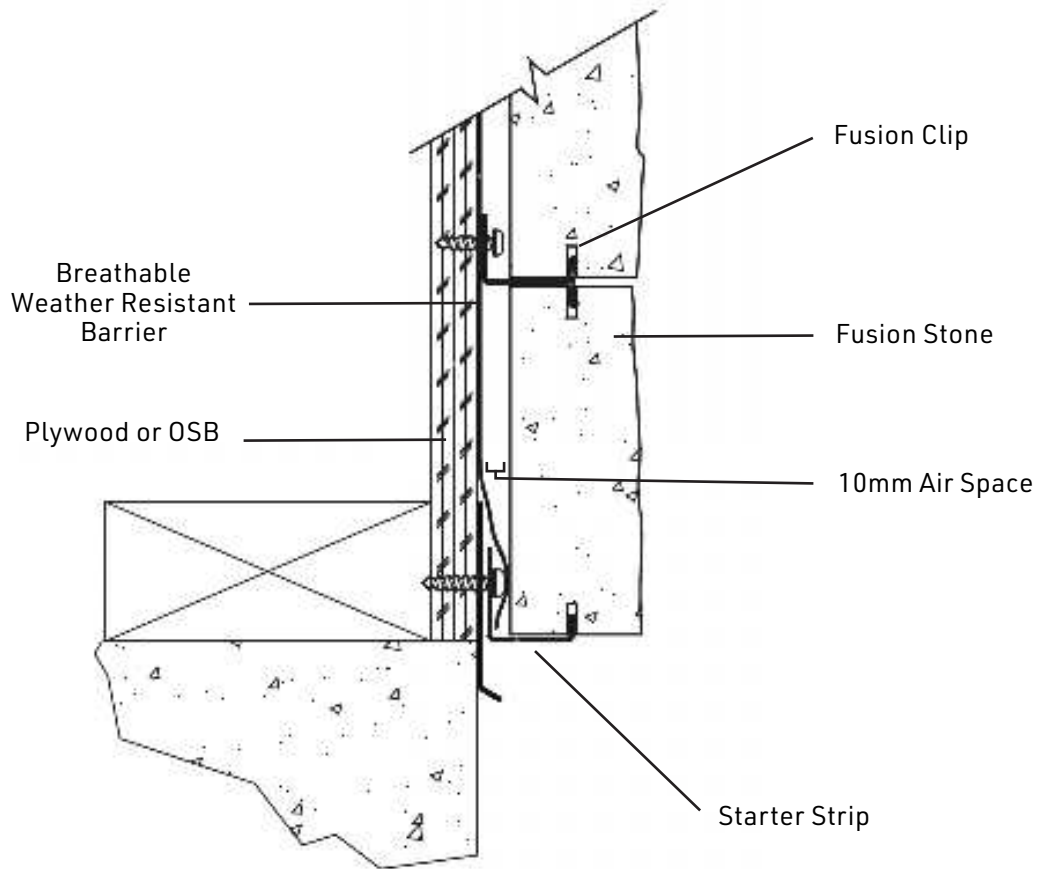
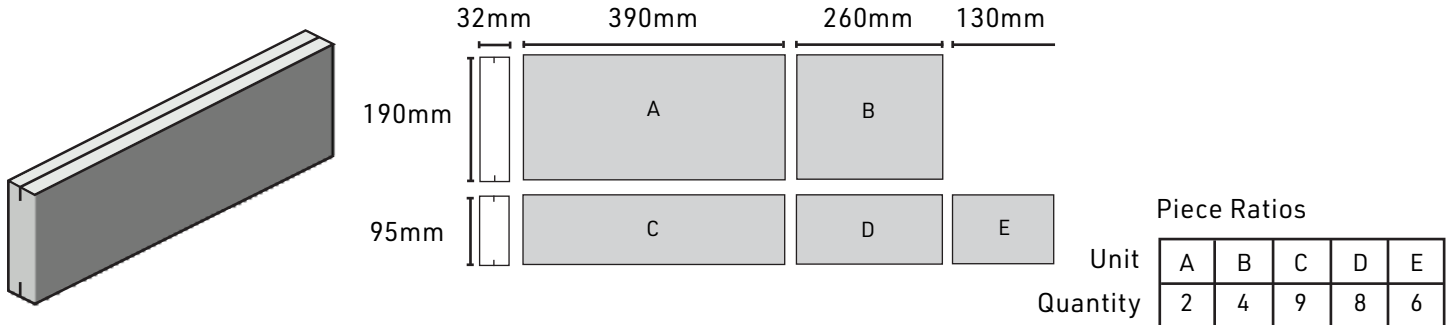


# TECHNICAL DETAILS

## Dry-Stack Stone



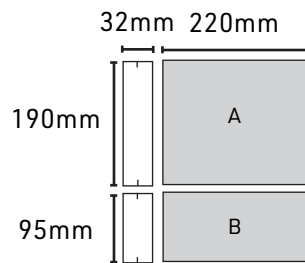
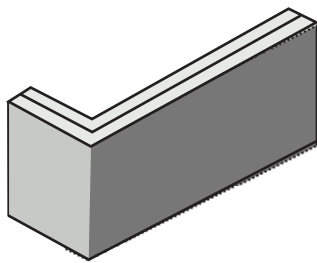
### PRODUCT DRAWINGS



## PRODUCT DETAILS

	Dry-Stack Stone Bulk Pak		Dry-Stack Stone Small Pak		Dry-Stack Stone Corner Pak	
	Metric	Imperial	Metric	Imperial	Metric	Imperial
Selling UoM		BP		SP		CP
Units/Skid		1		27		27
Weight/UoM	612kg	1,346lbs	33.2kg	73lbs	20.5kg	45lbs
Weight/Skid	612kg	1,346lbs	1,345kg	2,960lbs	836kg	1,840lbs
# of Layers	N/A	N/A	3	3	3	3
UoM/Layer	N/A	N/A	9	9	9	9
Coverage/Unit	9.29m <sup>2</sup>	100sf	0.47m <sup>2</sup>	5sf	1.22lm	4lf
Coverage/Skid	9.29m <sup>2</sup>	100sf	18.6m <sup>2</sup>	200sf	48.77lm	160lf
Pallet Size	107cmx122cm	48"x42"	107cmx122cm	48"x42"	107cmx122cm	48"x42"

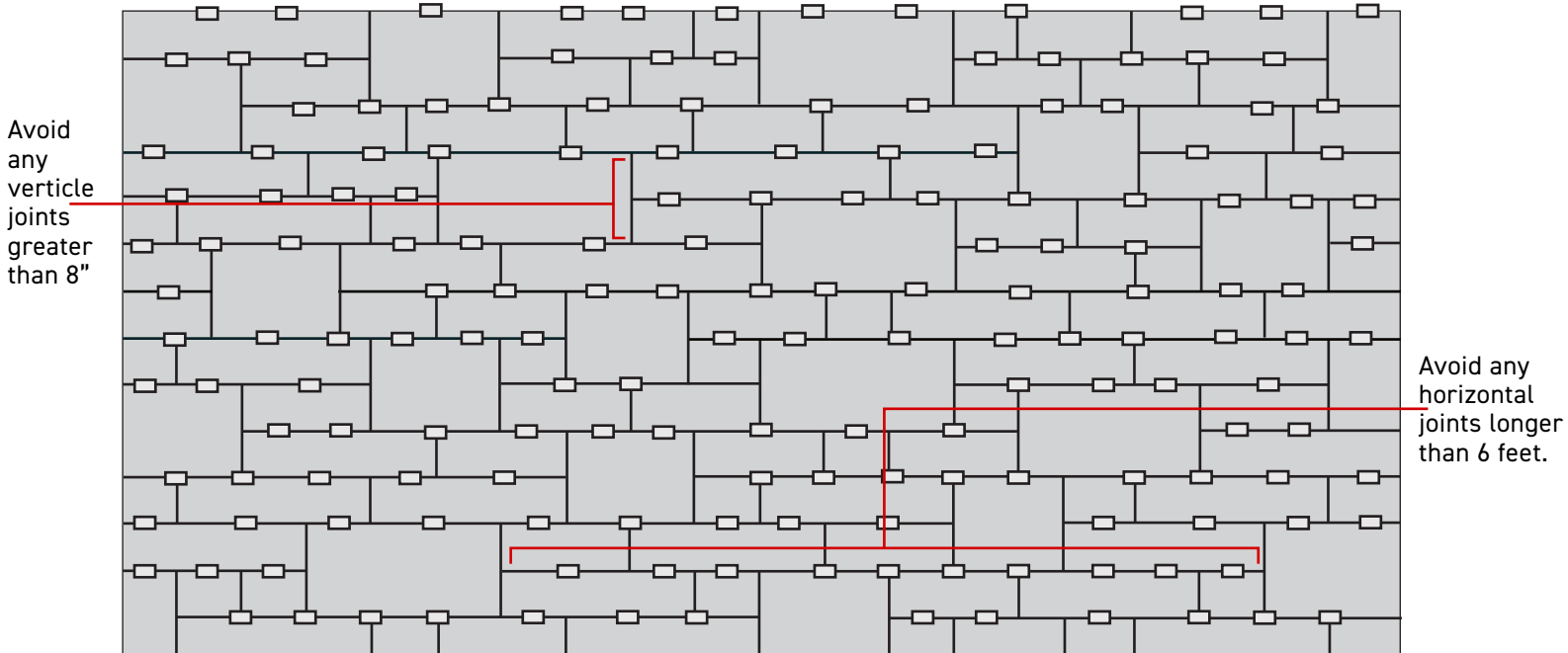
## CORNERS



Piece Ratios

Unit	A	B
Quantity	1	2

## TYPICAL INSTALLATION PATTERN



- Typical Installation Guidelines:
- Blend product from multiple packages for most natural look
  - It is important to use all the pieces from multiple Small-Paks, or Bulk-Paks to ensure a good layout and appearance.

## TYPICAL COURSING GUIDE

### Vertical Units

1	190mm	7.5"
2	380mm	15"
3	570mm	22.5"
4	760mm	30"
5	950mm	37.5"
6	1,140mm	45"
7	1,330mm	52.5"
8	1,520mm	60"
9	1,710mm	67.5"
10	1,900mm	75"
20	3,800mm	150"
30	5,700mm	225"
40	7,600mm	300"
50	9,500mm	375"
100	19,000mm	750"

1	95mm	3¼"
2	190mm	"
3	285mm	"
4	380mm	"
5	475mm	"
6	570mm	"
7	665mm	"
8	760mm	"
9	855mm	"
10	950mm	"
20	1,900mm	"
30	2,850mm	"
40	3,800mm	"
50	4,750mm	"
100	9,500mm	"

## CODES & STANDARDS

Fusion Stone Products are supported by the following National Codes & Standards. Refer to local building codes and standards to confirm best practice.

CCMC# 14008-R

## HATCH PATTERNS & TEXTURE MAPS

To access Shouldice Stone Hatch Patterns and texture maps visit the corresponding [shouldice.ca product page](#) for current availability.

## CONTACT US

For technical questions regarding our product line please contact our knowledgeable customer service team. By phone: 800.265.3174 or email: [solutions@shouldice.ca](mailto:solutions@shouldice.ca)