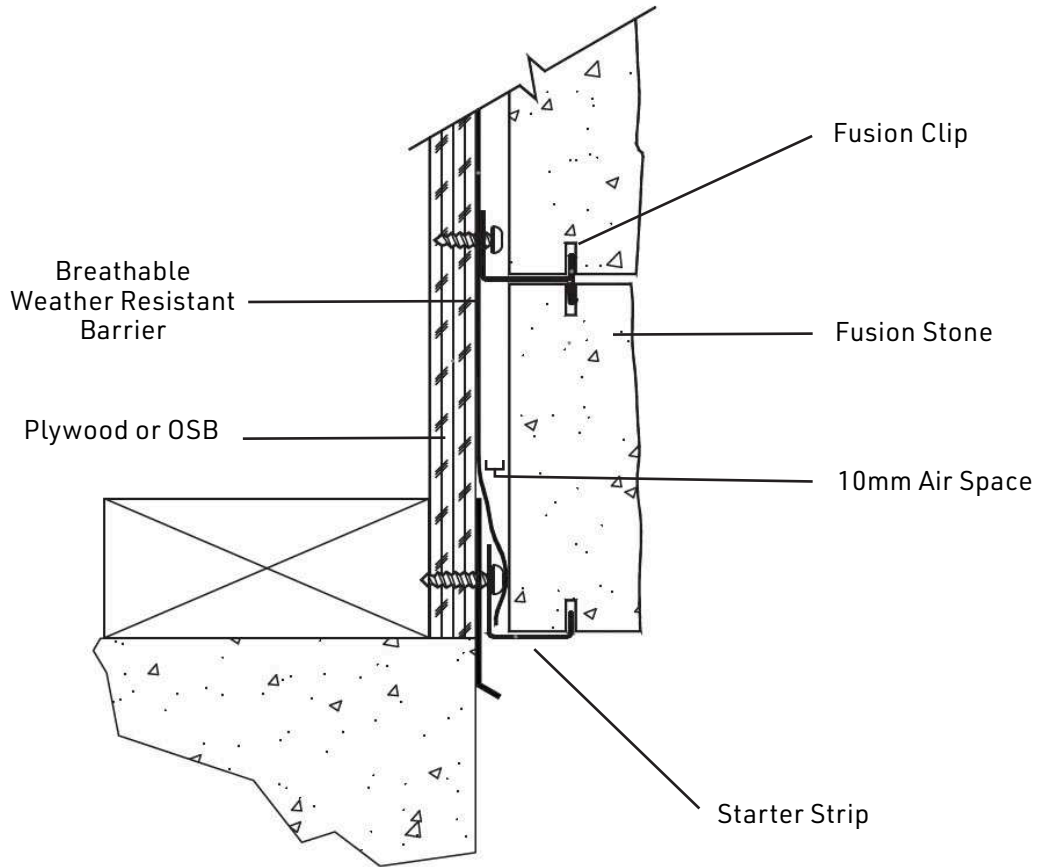
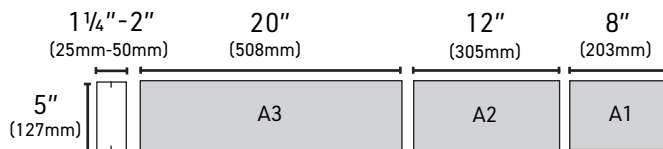
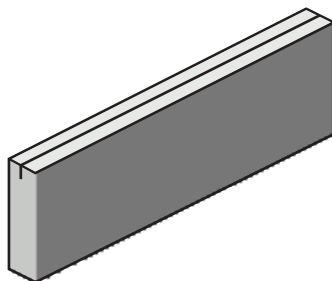


TECHNICAL DETAILS

Great Lakes Stone



PRODUCT DRAWINGS



Piece Ratios

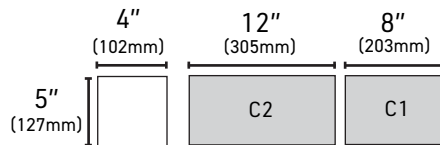
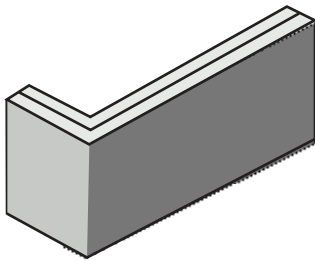
Unit	A3	A2	A1
Quantity	1	1	1

PRODUCT DETAILS

	Great Lakes Stone Bulk Pak		Great Lakes Stone Small Pak		Great Lakes Stone Corner Pak	
	Metric	Imperial	Metric	Imperial	Metric	Imperial
Selling UoM		BP		SP		CP
Units/Skid		1		27		27
Weight/UoM	426kg	937lbs	32.5kg	71.6lbs	31.6kg	69.6lbs
Weight/Skid	426kg	937lbs	897kg	1,973lbs	872kg	1,919lbs
# of Layers	N/A	N/A	3	3	3	3
UoM/Layer	N/A	N/A	9	9	9	9
Coverage/Unit	6.60m ²	71sf	0.46m ²	5sf	1.52lm	5lf
Coverage/Skid	6.60m ²	71sf	12.54m ²	135sf	41.15lm	135lf
Pallet Size	107cmx122cm	48"x42"	107cmx122cm	48"x42"	107cmx122cm	48"x42"

CORNERS

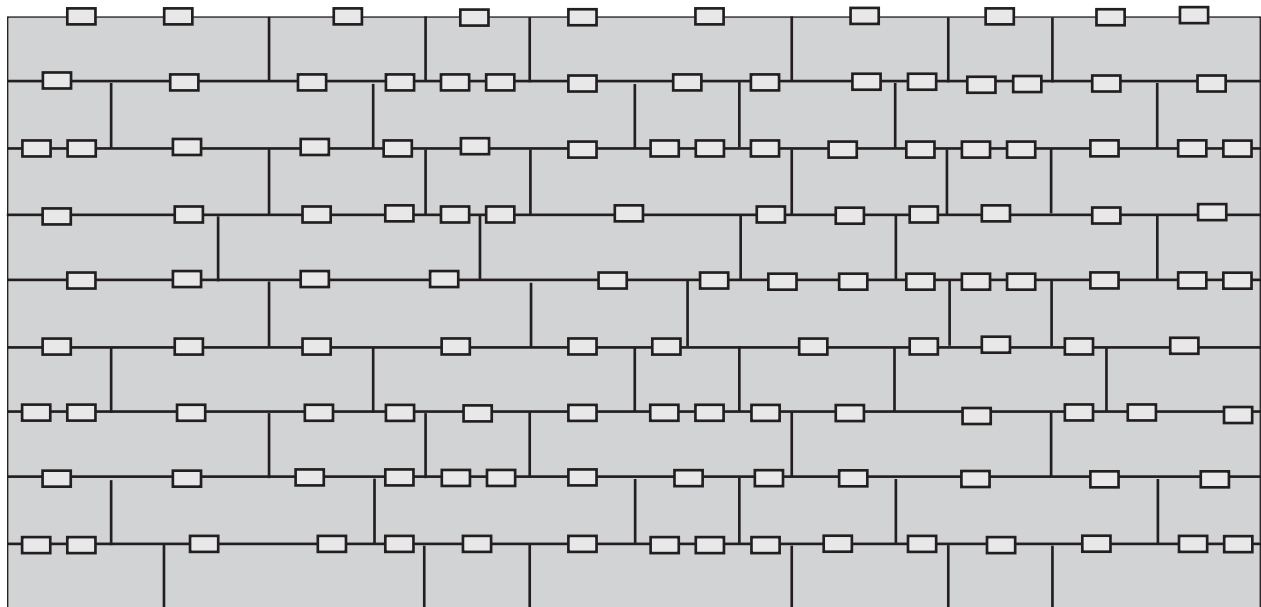
Corner units are sold separately.



Piece Ratios

Unit	C2	C1
Quantity	1	3

TYPICAL INSTALLATION PATTERN



- Typical Installation Guidelines:
- Blend product from multiple packages for most natural look
 - It is important to use all the pieces from multiple Small-Paks, or Bulk-Paks to ensure a good layout and appearance.

TYPICAL COURSING GUIDE

Vertical Units

1	127mm	5"
2	254mm	10"
3	381mm	15"
4	508mm	20"
5	635mm	25"
6	762mm	30"
7	889mm	35"
8	1,016mm	40"
9	1,143mm	45"
10	1,270mm	50"
20	2,540mm	100"
30	3,810mm	150"
40	5,080mm	200"
50	6,350mm	250"
100	12,700mm	500"

CODES & STANDARDS

Fusion Stone Products are supported by the following National Codes & Standards. Refer to local building codes and standards to confirm best practice.

CCMC# 14008-R

HATCH PATTERNS & TEXTURE MAPS

To access Shouldice Stone Hatch Patterns and texture maps visit the corresponding [shouldice.ca product page](#) for current availability.

CONTACT US

For technical questions regarding our product line please contact our knowledgeable customer service team. By phone: 800.265.3174 or email: solutions@shouldice.ca