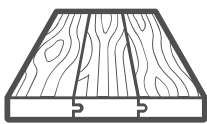




Pre-finished tongue and groove panels.

Ready Pine is the fast and convenient way to install your pre-finished tongue and groove pine for ceilings and walls.



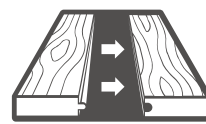
Pre-finished panels

Our superior fit end-matched panels come pre-finished and sealed on the back to prevent warping.



No more messes

Choose from variety of factory applied stains and say goodbye to drips, runs and odours.



Easy installation

Just install and you're done. It's fast and easy with less waste for faster project completion time.



Proudly made in Canada

www.readypine.com

Natural Beauty

Ready Pine is available in 13 stain colours that each bring out and enhance the look of the wood. The colours are translucent, which allows the wood grain and knots to show through. Ready Pine is also available in a clear finish that does not alter the natural colour of the wood, but allows it to mellow over time, giving it a rich, warm character that only quality wood can offer. They are all top coated with the same clear finish as the natural colour, giving it a smooth professional look. Some colours offer a more traditional look, while others are more contemporary.

All colours are available in both the V-match and Shiplap (Nickel Gap) profiles. Colours may not be exactly as shown. Refer to colour samples from your dealer for colour matching.



Natural



Golden Pecan



Ipswich Pine



Puritan Pine



Early American



Autumn Pine



Red Oak



Mocha



Pickled Pine



Beige Grey



Nightfall



Seagull Grey



Bennington Grey



Westcott Navy



MDF Cloud White Opaque



Just install and... you're done.

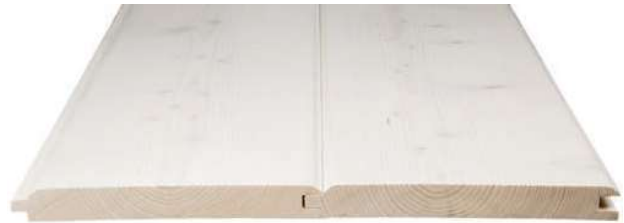
Skip the staining! Ready Pine is available in a variety of colours, and is sealed in a low sheen topcoat to prevent cupping and warping. Forget the brushes, tape, and paint odours - when you're finished installation, your project is complete!

Profile Choices

While both profiles use a tongue and groove system, our Shiplap (Nickel Gap) profile features a 1/8" wide channel between each panel. Our V-Match profile features a "V" shaped slot between each panel. Both are available in 6" and 8" widths.



Shiplap (Nickel Gap) Profile

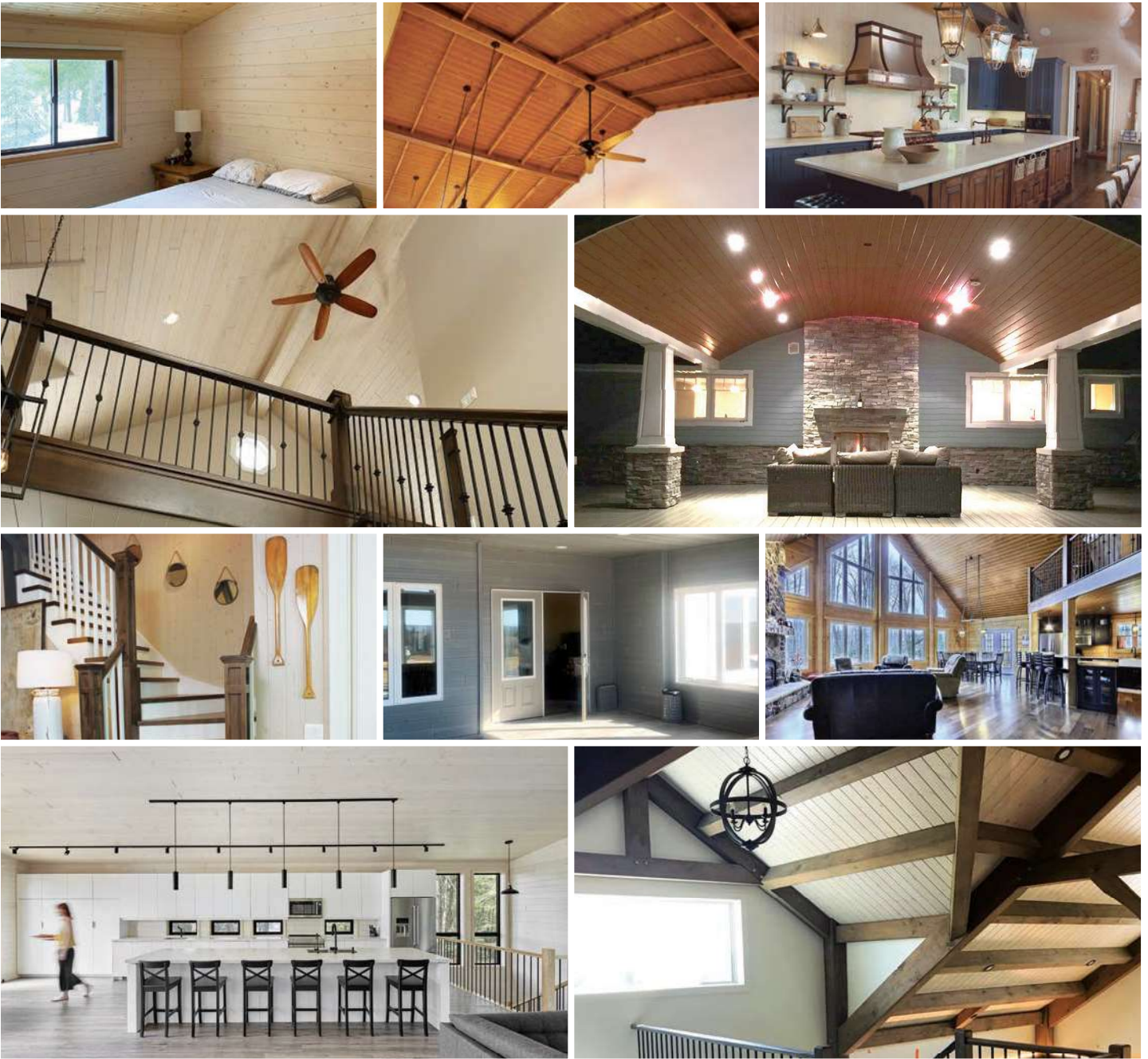


V-Match Profile

End Matching

Unique to Ready Pine is our end-matching, which saves you time and money, as well as greatly improves the fit and finish of your project. The ends have the same bevel as the sides. With T&G on the ends, there is no need to splice over a stud or joist. When you get to the end of a row, take the off-cut back to the beginning to start the next row. Installation time is greatly reduced since you don't need to measure, cut and dress each end.





For over 20 years, Horizon Coatings Inc. has been manufacturing Ready Pine tongue and groove paneling using state-of-the-art machinery to produce a perfect factory finish.


✉ info@readypine

☎ (519) 669-8830

📘 @readypine

🌐 readypine.com

Ready Pine, Waterloo, Ontario

 Proudly made in Canada